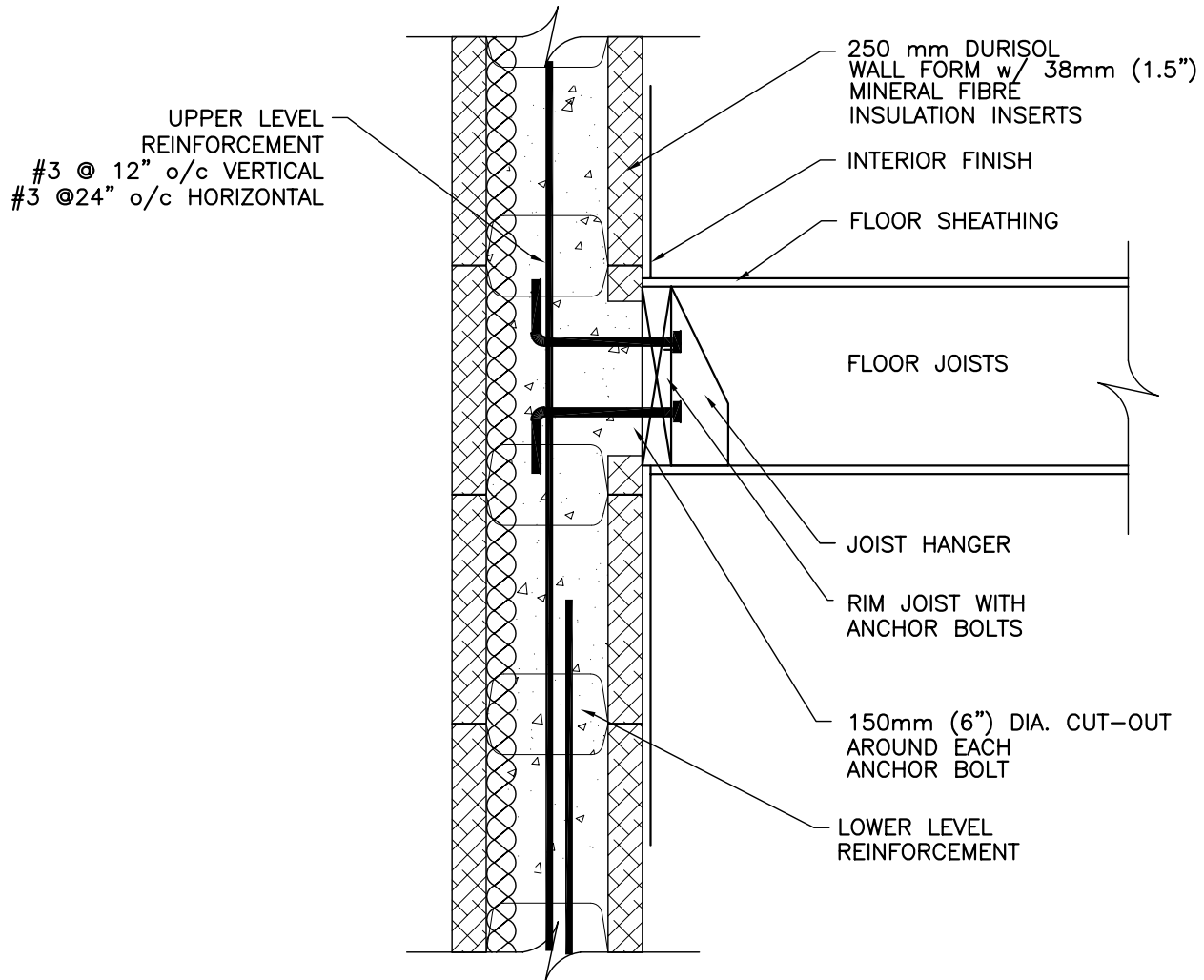


NOTES

1. MAXIMUM UNSUPPORTED WALL HEIGHT = 9'-0"
2. POSITION ABOVE GRADE REINFORCEMENT TOWARDS CENTER OF WALL UNLESS OTHERWISE NOTED
3. REFER TO SPECIFICATIONS FOR ADDITIONAL DURISOL INFORMATION



TYPICAL SECTION

TITLE:
DURISOL FLOOR DETAIL NO. 10

PROJECT:
DETAILS - DURISOL WALLFORM SYSTEM

DATE: 04.17.01	REVISED:	DRAWN BY: JD	CHECKED BY: VA	FILE NAME: DFL-12
-------------------	----------	-----------------	-------------------	----------------------

JOB NO:

SCALE:
1 :10

DWG. NO:
DFL-12