

DURISOL WALL FORM SYSTEM

STANDARD WF
DIMENSIONS AND AVAILABILITY

Updated:

May 2007

Wall System Summary

The following Tables summarize the Wall Forms and overall wall systems that are possible using the standard Durisol Wall Forms.

Wall Form Types and Availability (Nominal Dimensions)

Wall Form Shape	Size (height x length)	AVAILABILITY				
		6" WF	8" WF	10" WF	12" WF	14" WF
Standard 3 Core	(12" x 36")	x	✓	✓	x	x
L - Corner (2 Core) ¹	(12" x 24")	x	✓	✓	x	x
Corner (Modified End)	(12" x 24")	✓	x	x	✓	✓
End (2 Core)	(12" x 24")	x	x	x	x	✓
Split/End (2 Core)	(12" x 24")	x	✓	✓	✓	x
Standard 2 Core	(12" x 24")	✓	x	x	✓	✓

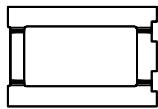
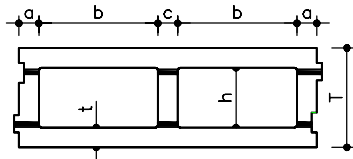
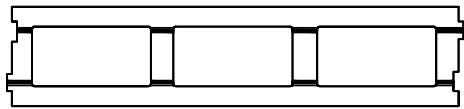
¹ All Corner Wall Forms are L-shaped with 12" return. Since the WF30 system has a thickness of 12" , the corner unit is a modified End Unit.

Wall System Summary

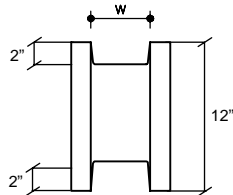
Wall Thickness	R-Value	Concrete Thickness (in)	Concrete Fill Vol. (yd ³ / ft ²)	Total Weight of Wall (lb / ft ²)	Application
6"*	8	3 1/8	0.0078	27	Above Grade
8"	8	4 3/4	0.0123	35	Above Grade
10"	8	6 3/4	0.0179	46	Above & Below Grade
10"	14	5 1/4	0.0140	41	Above Grade
12"	8	8 1/2	0.0217	56	Above & Below Grade
12"	14	7	0.0186	50	Above & Below Grade
12"	21	5 1/2	0.0146	47	Above Grade
14"	8	10 3/8	0.0265	69	Above & Below Grade
14"	14	9	0.0225	62	Above & Below Grade
14"	21	7 1/2	0.0186	55	Above & Below Grade
14"	28	5 1/2	0.0140	46	Above Grade

* 6" WF is not typically intended for use as a load-bearing wall.

Standard Wall Forms (Imperial)

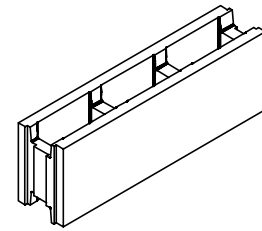


Plan View

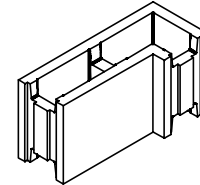


Section

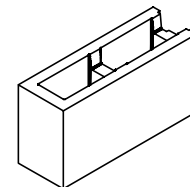
Standard - 3 Core
(8" & 10" WF only)



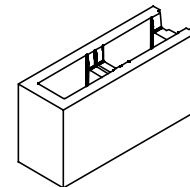
L - Corner
(8" & 10" WF only)



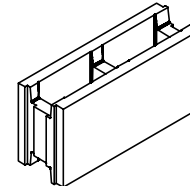
End
(14" WF only)



split/End = 2 Half Form
(8", 10", 12" WF only)



Standard - 2 Core
(6", 12", 14" WF only)



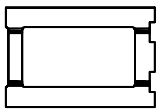
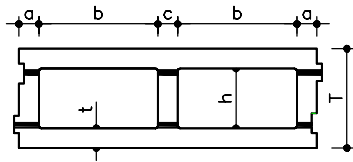
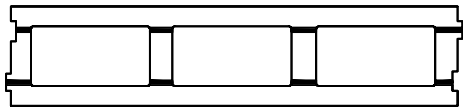
* Configuration of horizontal interlock varies among Wall Form types

Standard Wall Form Schematic

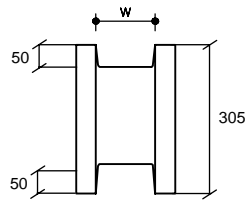
Standard Wall Form Dimensions (Imperial)

Wall Form Type	Wall Form Weight (lbs)	FORM DIMENSIONS							CONCRETE CORE DATA	
		T (in)	t (in)	a (in)	c (in)	w (in)	b (in)	h (in)	X-Sect Area (in ²)	Fill Volume (yd ³ / ft ²)
6" WF	16	5 7/8	1 3/8	1 7/8	1 3/4	3 1/4	9 1/8	3 1/8	28.5	0.0078
8" WF	33	7 7/8	1 5/8	1 3/4	1 1/2	4 3/8	9 1/2	4 3/4	44.3	0.0123
10" WF	40	10	1 3/4	1 3/4	1 3/4	6 3/4	9 1/2	6 3/4	64.1	0.0179
12" WF	31	12	1 3/4	1 3/4	1 3/4	8 1/2	9 3/8	8 1/2	79.7	0.0217
14" WF	38	14	1 3/4	2	1 3/4	10 3/8	9 1/8	10 3/8	94.5	0.0265

Standard Wall Forms (SI)



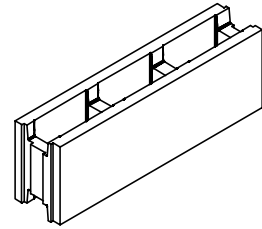
Plan View



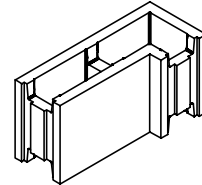
Section

* Configuration of horizontal interlock varies among Wall Form types

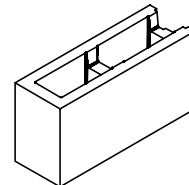
Standard - 3 Core
(8" & 10" WF only)



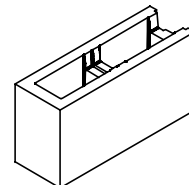
L - Corner
(8" & 10" WF only)



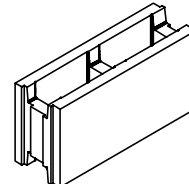
End
(14" WF only)



split/End = 2 Half Form
(8", 10", 12" WF only)



Standard - 2 Core
(6", 12", 14" WF only)

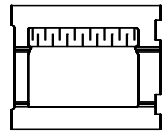
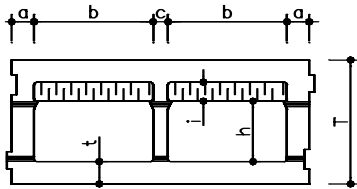
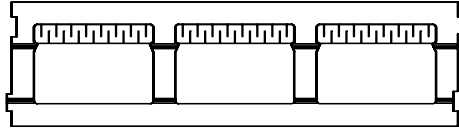


Standard Wall Form Schematic (SI)

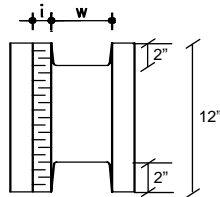
Standard Wall Form Dimensions (SI)

Wall Form Type	Wall Form Weight (kg)	FORM DIMENSIONS							CONCRETE CORE DATA	
		T (mm)	t (mm)	a (mm)	c (mm)	w (mm)	b (mm)	h (mm)	X-Sect Area (mm ²)	Fill Volume (m ³ / m ²)
6" WF	8	150	35	46	46	80	233	80	18650	0.064
8" WF	15	200	40	43	38	120	238	120	28000	0.101
10" WF	18	255	42	45	45	172	242	172	41500	0.147
12" WF	14	305	45	45	45	216	238	216	51400	0.178
14" WF	17	360	45	51	48	265	232	265	61500	0.217

Thermal Wall Forms (Imperial)

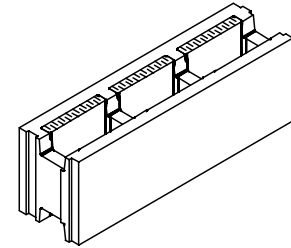


Plan View

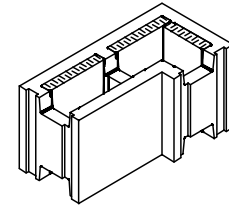


Section

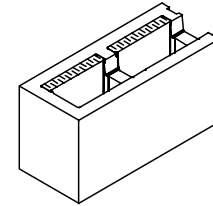
Standard - 3 Core
(8" & 10" WF only)



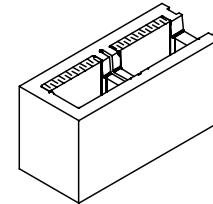
L - Corner
(8" & 10" WF only)



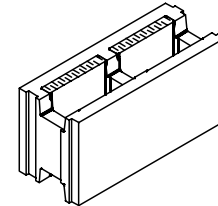
End
(14" WF only)



split/End = 2 Half Form
(8", 10", 12" WF only)



Standard - 2 Core
(6", 12", 14" WF only)



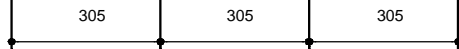
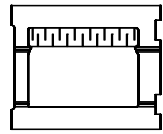
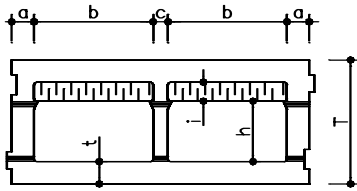
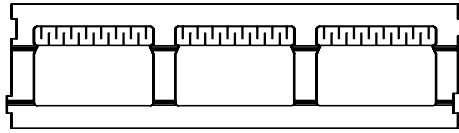
* Configuration of horizontal interlock varies among Wall Form types

Thermal Wall Form Schematic

Thermal Wall Form Dimensions (Imperial)

Wall Form Type	Wall Form Weight (lbs)	FORM DIMENSIONS								CONCRETE CORE DATA	
		T (in)	t (in)	a (in)	c (in)	w (in)	i (in)	b (in)	h (in)	X-Sect Area (in ²)	Fill Volume (yd ³ / ft ²)
10" WF (R-14)	43	10	1 3/4	1 3/4	1 3/4	5 1/4	1 1/2	9 1/2	5 1/4	49.9	0.0140
12" WF (R-14)	35	12	1 3/4	1 3/4	1 3/4	7	1 1/2	9 3/8	7	65.6	0.0186
12" WF (R-21)	39	12	1 3/4	1 3/4	1 3/4	5 1/2	3	9 3/8	5 1/2	52.3	0.0146
14" WF (R-14)	39	14	1 3/4	2	1 3/4	9	1 1/2	9 1/8	9	82.1	0.0225
14" WF (R-21)	41	14	1 3/4	2	1 3/4	7 1/2	3	9 1/8	7 1/2	68.4	0.0186
14" WF (R-28)	44	14	1 3/4	2	1 3/4	5 1/2	5	9 1/8	5 1/2	50.2	0.0140

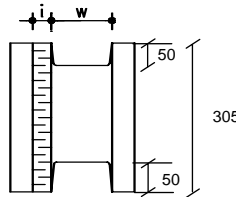
Thermal Wall Forms (SI)



Plan View

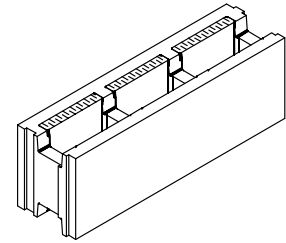
* Configuration of horizontal interlock varies among Wall Form types

Thermal Wall Form Schematic (SI)

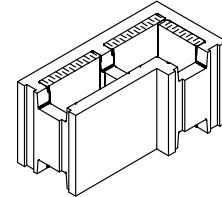


Section

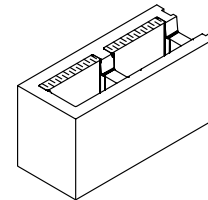
Standard - 3 Core
(8" & 10" WF only)



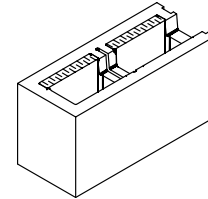
L - Corner
(8" & 10" WF only)



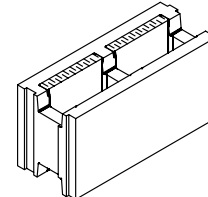
End
(14" WF only)



split/End = 2 Half Form
(8", 10", 12" WF only)



Standard - 2 Core
(6", 12", 14" WF only)



Thermal Wall Form Dimensions (SI)

Wall Form Type	Wall Form Weight (kg)	FORM DIMENSIONS (mm)								CONCRETE CORE DATA	
		T	t	a	c	w	i	b	h	X-Sect Area (mm ²)	Fill Volume (m ³ / m ²)
10" WF (R-14)	20	254	45	45	45	133	38	241	133	32100	0.115
12" WF (R-14)	18	305	45	45	45	178	38	238	178	42300	0.153
12" WF (R-20)	19	305	45	45	45	140	76	238	140	33700	0.120
14" WF (R-14)	19	360	45	51	48	227	38	232	227	52650	0.185
14" WF (R-21)	20	360	45	51	48	190	76	232	190	44100	0.153
14" WF (R-28)	21	360	45	51	48	138	127	232	138	32100	0.115